



LIDS **Geographic Information System**

asseco.com/ce

ASSECO

LIDS - Geographic Information System

LIDS is an open Geographic Information System built on proven industrial standards and top information technologies designed to capture, manage, analyse and display spatially oriented data in institutions of all sizes. LIDS is not only GIS, but can also be used as an asset database. LIDS usually serves as a foundation stone for special solutions for companies managing extensive assets, a wide landscape, large industrial areas, mines, engineering and telecom companies, municipalities, energy providers, transport infrastructure, public offices and insurance companies etc.

LIDS is an open information system built on proven industrial standards and top information technologies. The system has the modern three-tier Service Oriented Architecture (SOA). The whole solution is based on LIDS Application Server running in the environment of Java EE application server. LIDS is a highly scalable and parameterizable system. Thanks to this fact, the system is convenient for small, medium-sized as well as large companies – from solutions for small workgroups up to enterprise wide implementations.

Basic Features

LIDS allows to display GIS data provided by WFS (Web Feature Service). Spatial data of different types can be displayed: various formats of georeferenced raster data, vector elements, CAD drawings or data provided by map servers through WMS (Web Map Service). Data can be displayed or modified in a graphical browser windows, forms and reports.

LIDS offers comfortable access to GIS data, easy creation of queries and high quality map outputs or internet data publishing and functions for export of the spatial data to standard graphic formats. GIS objects can connect and display attachments (documents) or details (group of associated objects – e.g., detailed diagrams and schemas).

System properties and behaviour are controlled by project metadata which can be flexibly modified without necessity of programming.

Main Benefits

- Proven standard data models for specific solutions
- Flexible modification of data models by modifying project metadata without necessity of programming
- System properties are controlled by project metadata
- Intuitive user environment
- Comfortable access to GIS data, easy creation of queries and outputs
- Possibility of working in off-line mode, utilization of long transactions including the work with data history
- Wide spectrum of tools and functions for capturing, updating and checking data, batch data input, data analyses
- Efficient work with raster spatial data
- Top thematized outputs, output reports, details, schemes, longitudinal profiles, etc.

LIDS Application Server

LIDS Application Server (LIDS AS) takes the central role in the architecture of the LIDS7 system. It is not only a bridge between data storages and client GIS applications but also provides a number of such key functions as deriving attributes, tracing or control mechanisms for securing the correctness of data entering the system. Thanks to utilizing standards, LIDS AS plays also a key integration role when integrating LIDS7 into the information environment.

A large part of the application logic of the LIDS7 system is implemented on LIDS AS. LIDS AS provides not only basic services for presenting, updating and validating GIS data (Web Feature Service, Web Map Service, Data Validation Service, Transaction Service, etc.), services for evaluating access rights (Access Rights Service) but also services for work with topology (Linear Topology, Areal Topology and Spatial Relations), services for a batch data input (Import Service and Bulk Edit Service), management of attachments – documents (Attachment Service) or generation of reports (Report Service).

LIDS Edit

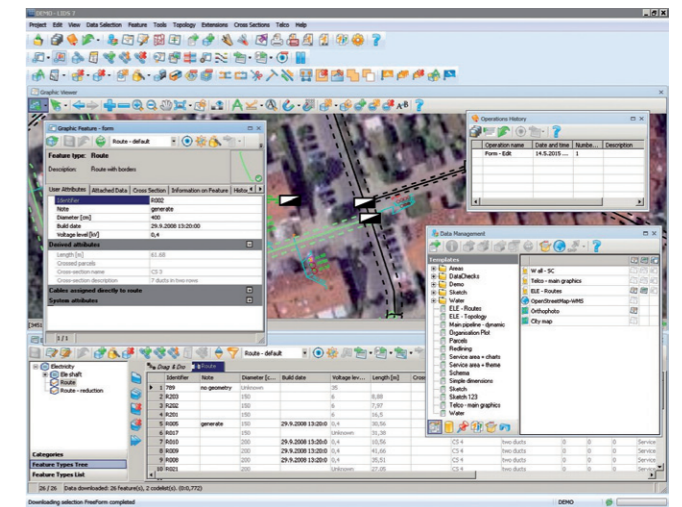
LIDS Edit is a client application designed especially for capturing, updating and managing geographic data using comfortable CAD functions. However, in addition, the application provides the user with a whole range of analytic and output functions and functions for managing backdrop maps.

LIDS Explorer

LIDS Explorer is used by end users of GIS especially for comfortable presentation of spatial and attribute data of the geographic information LIDS system. In addition, the application enables the user to modify attribute data and create graphic correction data (redlines).

LIDS Browser

LIDS Browser is an ultra-light web client designed for viewing GIS data in a simple user interface of Microsoft Internet Explorer without necessity of installing. LIDS Browser is suitable for integration into company portals or web applications. The chosen technology does not require the installation of any additional software.



Complex System SAMO

Our solution SAMO makes it possible to incorporate existing user applications into the target Asset Management solution or we can implement only certain modules. SAMO individual modules can be easily integrated with other solutions into a functional unit [e.g. with SAP solutions, different SCADA systems or EAM]. SAMO modules are ISO 55000 series compliant.

LIDS

Geographic Information System

Asseco Central Europe, a. s.

Trenčianska 56/A
821 09 Bratislava
Slovak Republic
+421 2 20 838 400

Budějovická 778/3a
140 00 Praha 4
Czech Republic
+420 234 292 500

sales@asseco-ce.com

samo-asseco.com

04 | 2016

The logo for Asseco, featuring the word "ASSECO" in a bold, black, sans-serif font. The letters are stylized with a unique, blocky design, particularly the 'A' and 'S' characters.